
BE A



JECRC[™]
UNIVERSITY
BUILD YOUR WORLD

INFORMATION BROCHURE 2021

JECRCian

CHAIRPERSON SPEAKS

सा विद्या
या विमुक्तये

Dear Students

Swami Vivekananda, the great reformer and thinker of India used to say that **'A Nation is advanced in proportion to education and intelligence spread among the masses.'** He held the opinion that a sculptor has a clear idea about what he wants to shape out of the marble block; a painter knows what he is going to paint and similarly if a teacher molds the students then he is actually molding the future of a nation. Swamiji attempted to establish, through his words and deeds, that the end of all education is man making. Similar are my views that our nation will grow leaps and bounds if the education provided to its youth is contributing to the success of society, nation and humanity.

JECRC University with its decade long background has tried to provide the best education, research innovation, job opportunities and overall development to its students. It has created a platform that provides the world-class education and ethical values which help growing India along with making its mark in the Globe.

I invite you to explore the corridors of JU which will give you the glimpse of a perfect future. Come, join and give voice to your unsaid dreams.

Best Wishes!!

O.P. Agrawal
Chairperson



President Speaks



Prof. Victor Gambhir

All of us are passing through a testing time due to pandemic and a lot of disruption has happened in the 15 months in the education canvass of India. Had there been no pandemic, this would have been a fantastic period for the education sector because of the announcement of the New Education Policy 2020 and the initiatives taken by the Government of India in digitisation of the learning process, focus on research outcomes, participation of higher education institutions in national and international rankings etc. The blessing in disguise in pandemic times was the continuation of theory classes through online mode, the transition which has been made very smoothly across educational institutions.

JECRC University has become a brand to reckon with because of multiple reasons including committed and qualified teachers, innovation-led research culture, state-of-the-art infrastructure including labs, innovation-led research environment, incubation and start-ups ecosystem, exemplary placement records on year to year basis, and overall highly committed and energetic students, who remain on the front and accept each and every challenge of quality learning.

We, at JECRC University, strongly believe that when a student graduates from a university, there must be an affirmative change in her/his knowledge, skills, behaviour, and attitude in such a manner that she/he is prepared to take the work responsibility at the employer's end head on. The entire teaching-learning ecosystem in JECRC University has been designed keeping in mind the above conviction and it strongly reflects in the curriculum and outside-class activities. There is a complete focus on Outcome-Based Education and Project-Based Learning.

Once you take admission in JECRC University, please be assured that you will be on the right track of your career-building, provided you are committed and career-oriented. Without repeating the strengths of JECRC University which are reflected in this Admission Brochure, I can assure you that you will enjoy your journey with us and achieve whatever goals you set for yourself.

Keep in mind the lines of Swami Tulsidas in Ramcharit Manas:-

**सकल पदार्थ हैं जग माहीं,
कर्महीन नर पावत नाहीं।**

Shri Krishna in Bhagwad Geeta tells Arjun that "You are kept from your goals not by obstacles but by a clear path to a lesser goal." Once you have chosen to repose your faith in JECRC University, remain assured that the only person who may stop you from succeeding will be YOU only.

Welcome at JECRC University. Come and Build Your World.



TRAINING & PLACEMENT

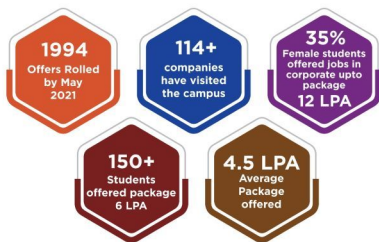
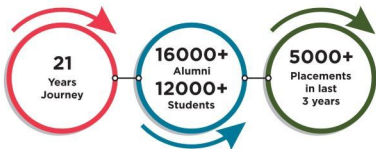
Corporate connect plays a crucial role in training & placement cell of any institution, providing multiple & versatile career opportunities for Graduates and Post Graduates passing out by keeping in touch with reputed firms and industrial establishments. The Corporate Connect program is a strategic initiative under taken by the JECRC Foundation to integrate various facets of real-life corporate experiences into the curriculum. As a part of the Corporate Connect program multiple hierarchy level executives, entrepreneurs and eminent industry experts from various fields and industry sectors are invited to share their practical experiences in the context of theoretical discourses the students have undergone. This not only helps students to take their learning out from the class room to apply it in real life but also increases their employability quotient by mentoring them to have an application and performance-driven mindset.

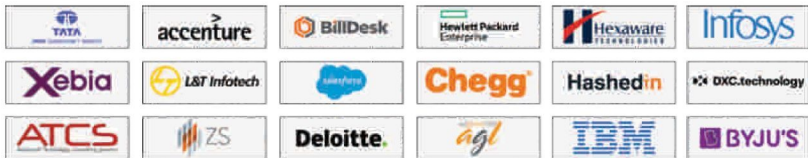
CORPORATE CONNECT



In a motto to ensure placements of students appearing in campus drives we conduct pre-placement training in a form of Campus Recruitment Training (CRT) Programs for all the schools (Engineering, Computer Application, Commerce & Management, Sciences, Design, Hotel & Hospitality, Journalism & Mass Communication, Law and Agriculture). CRT is specially designed for 200 hrs program which covers all the pre required training specifications by various companies in their selection process which covers Aptitude, Technical, Communication skills assessments. We conduct offline sessions by experts of industry, topic and company specific on/off line Tests, Mock sessions for Technical & HR Interviews, Group Discussions & Presentations. In addition to engineering and management, we design extraordinary sessions to develop hone skills & grooming personally and professionally to place students of new schools which cover Design, Hotel & Hospitality, Mass Communication and Law school.

The number of students placed through campus recruitment is continuously rising. On invitation, many reputed industries visit the institute to conduct the placement process. **We have been successful in maintaining our high placement statistics over the years and the fact that our students bear the recession blues with record-breaking placements itself is a testimony to our quality.**





C-Cube Cell - a specially focused cell for Competition Based Hiring and preparing students for various institutional, national and international level Hackathon and coding contests etc.

New School of Placement Cell—an initiative focused to internship cum placements for students of school of Design, Hotel & Hospitality, Journalism & Mass Communication, Law and Agriculture. The cell helps to create an Eco system by organizing various workshops, events, floor activities, interaction with experts from industry, visit to various places, portfolio design etc leading to projects and internships cum placement offers.

This year JECRC Foundation has successfully hosted companies covering all the verticals such as Service provider, Information Technology, Consulting, Product Design & Manufacturing, FMCG, Banking, Real Estate, Education, Management, Hospitality, Mass Media, Architect firms i.e. Accenture, TCS, HP, Mindtree, SopraSteria, Hexaware, ATCS, IBM, L&T Infotech, Tata Power, Pinnacle InfoTech, Deloitte, Vodafone Idea Ltd. ,Jaro Education, BYJUs, Extramarks, Infosys, Wipro, E&Y, ZS Associates, Hotel The Lalit, Crowne Plaza, Marriott, INOX Group, India Today, TV18, Rajasthan Patrika, Dainik Bhaskar, India News, AU Small Finance Bank, Cult.fit, Hiren Patel Architects, Shantanu Garg Designs, Kredenza Interior Studio etc.

Following are some of our recruitment partners:

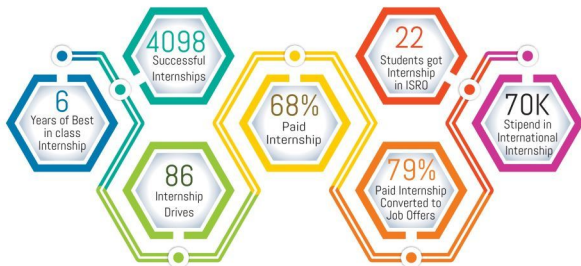
- Tata Consultancy Services
- Nokia-Siemens Networks
- Asia Motor Works
- Taj Group
- Tata Technologies
- Essar Steel
- Uttam Galva (Steel)
- Surya Roshni Ltd.
- Patni Computers
- STG International Inc.
- LG Electronics
- L&T India
- Infosys Technologies
- Jindal Steel
- Reliance Industries Ltd.
- Sona Koyo Steering
- Goodricke Precise
- Wipro Technologies
- Zensar Technologies
- Bosch India Ltd.
- Unique Builders
- JCB India Jaipur
- Caparo Corporation
- Honda Motorcycle Pvt. Ltd.
- Persistent Systems
- Capital IQ
- Bajaj Capital
- Godrej & Boyce
- Sriram Fertilizers & Chemicals
- Huawei Telecom
- Asian Paints
- Birla Cement
- Shriram General Insurance
- Dainik Bhaskar
- HDFC Bank
- Dabur Onquest
- ICICI Prudential
- Indian Immunological
- Kamdhenu Steels
- Coulera Technologies
- Cipla
- Reliance Jio Infocom Ltd.
- Tech Mahindra
- A3Logics
- Maruti Suzuki India Ltd.
- J K Cement
- Amol Pharmaceuticals
- Pfizer
- Sahara India
- Ahlcon Parenterals
- Fiserv India Ltd.
- Genus Overseas
- Reliance Money
- Reliance Insurance
- Videocon
- Mahindra & Mahindra
- ITC Ltd.
- Adani Group
- Tecnimont ICB Ltd.
- Appirio
- Pinnacle Infotech
- Sopra Steria
- Ericsson
- Wipro
- Capgemini
- Syntel Inc.
- Hexaview Technologies
- Hewlett Packard

INTERNSHIP

Seeing current situation of the market, where there is cut throat competition and that one can attain success only by gaining practical experience and exposure, JECRC University has introduced Internship program for all its final year students. Internship not only integrates knowledge and theory learned in classroom with practical application but also empowers interns by developing much solicited skills in professional setting.

JECRC University believes in 360° development of its students and to give them a competitive edge in a world of rising global competition for a talented and innovative workforce, we have adopted experimental learning in the form of internship. JECRC University firmly believes in importance of Internship as there is no substitute for experience.

This year, due to covid-19, evaluation of the internship was conducted online by domain specific panel of industry experts from renowned companies.



Our Recruiters:

| | | | | | | |
|------------------------|------------------------------|---|------------|-----------------------|-----------|-------------------------------------|
| Microsoft | ISRO | ORACLE FINANCIAL SERVICES | SIEMENS | SRI CEMENT LIMITED | इन्फोसिस | TAJ Hotels, Events and Villas |
| INFO OBJECTS | Skillrock | Marriott HOTELS & RESORTS WORLDWIDE | Zinnov | Fit | PWC | DIGITAL IMPACT 2021 |
| DLFA BUILDING INDIA | MATRIX TELECOM & SECURITY | एन टी पी सी NTPC A Nationalised Company | PERICENT | HexaVIEW | COGNUS | PWD |
| LIFEbyte | IBM | Fairmont | TTC HOTELS | THE LALIT | Fair View | Radisson |

JECRC INCUBATION CENTRE (JIC)



In modern times startups are the most important change required in the country.

JECRC Incubation Centre is promoting the culture of innovation and entrepreneurship among students and faculties to develop the robust entrepreneurial ecosystem in the country by mentoring young innovators and empowering them with the **21st-century skills** of critical thinking, design thinking, collaboration, and latest technologies. We are providing a real and viable alternative path to improve employability.

JECRC Incubation Center (JIC) is an integral part of JECRC University, which supports entrepreneurs early and helps them create commercially viable and scalable businesses. JIC fosters an entrepreneurial culture around academics, research, and innovation.

JECRC Incubation Centre is the first academic incubator in the state of Rajasthan with a well-defined Startup Policy for Students. The policy is designed with the core objective to support and enable innovative ideas to turn into successful startups. According to policy additional benefits will be given to incubated startups. (For mature and operational startups) and all the requisite facilities will be provided like structure Mentorship, Co-working space, Industry Connections, and Financial Assistance.

Recognition:

Recognized as one of the only twentyGroup 2 Centre (G2C) in India by Ministry of Electronics & Information Technology, GOI under TIDE2.0 Scheme.

Recognized as "Most Promising Academic Incubator in India" by Asia Today Research & Media

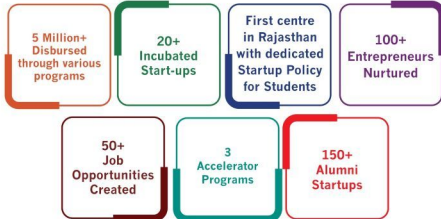
Partners of JIC

Digital Impact Square (DISQ), A Tata Consultancy Services Foundation Initiative

Digital Impact Square (DISQ) is an open social innovation center - in the city of Nashik, Maharashtra. DISQ encourages innovation using digital technologies to address social challenges prevalent in Health and Hygiene, Housing and Transportation, Food and Agriculture, Energy, Water and Environment, Financial and Personal Security, Citizen Empowerment and Transparency, Education and Skills development across India. Through this partnership JIC supports Early-stage startups to scale their innovation and to create a sustainable & scalable Social Start-up.

TIE Rajasthan

TIE Rajasthan is the premier entrepreneurship promotion organization of Rajasthan active in areas of educating, mentoring,



networking, incubating and investing in innovative startups since year 2002 in Rajasthan. Over 200 members of TIE Rajasthan represent different sectors of the industry and are working towards a common goal of fostering entrepreneurship. JIC has partner with TIE with the motive to build a robust startup ecosystem in Rajasthan.

Headstart

Headstart is one of India's oldest and largest startup ecosystem development organizations. They have been chasing the vision 'changing the world with entrepreneurship' ever since. It is a not-for-profit organization, almost entirely volunteer driven! JIC has collaborated with Headstart to aware and sensitize young student about entrepreneurship.

Technology Incubation & Development of Entrepreneurs (TIDE 2.0)

Ministry of Electronics and IT, (MEITY) India, selected JECRC University as one of the prestigious TIDE centers across the country, and the first one in Rajasthan. Under the TIDE grant program, we were given a great opportunity to scout, shortlist, and select the unique and innovative startups in their line of business. So far we have already disbursed over INR 44 lakhs in form of a grant to 08 startups. In the current TIDE 2.0 grant program, we have received an overwhelming response from startups across the country.

E-CELL

JECRC University Entrepreneurship Cell is a non-profit student organization dedicated to promoting the spirit of entrepreneurship among students. In the process of identifying, nurturing, training and establishing start-ups, E-CELL is involved in a wide range of activities. E-CELL is a part of the JECRC Incubation Centre.

“For the students, By the students”

Our Vision is to develop, enhance and carve out the inner entrepreneurial potentials of students and foster the thinking of entrepreneurship among them.

We build an interactive atmosphere among major components spanning students, aspiring and existing entrepreneurs, investors, mentors, through initiatives, interactive sessions and competitions etc.



ALUMNI ASSOCIATION

At JECRC University, we work to build a lifelong bond with the students and to support this motive, JU Alumni Association works to serve as a bridge between the Alumni and the University. We provide diverse and quality networking for Alumni in addition to opportunities for them to build a network of friends with over thousands of alumni who have achieved great success in their careers.

The objective to form the JU Alumni Association is to transform the idea of life from the individualism to unification and to create the opportunities where the alumni can contribute and share seamlessly. The vision is to help the fellow members, share and influence, with what they have achieved and can do.

Currently, we have 4000+alumni placed globally and for them we offer professional and personal support such as professional networking events and career services, continuing education opportunities, and use of campus facilities.

Our alumni act as a mentor for the current students and provide them right knowledge and skills., as well as help them to get placed in MNC's. Alumni entrepreneurs help to foster student entrepreneurship because they understand the current entrepreneurship ecosystem at our institute and help them to launch their careers.

The importance of alumni network for professional networking and career growth has come to life during the covid-19 pandemic. Even during the pandemic our alumni helped us through the online platforms. Some alumni contributed their presence in various events like Alumni Annual Meet, Alumni Mavericks Club Meet, Alumni Entrepreneurship Meet, Alumni Zarat Meet, Alumni Meet and Greet, Alumni Founders talk.

Many of the Notable Alumni are invited for judging many events, while many of our alumni are walking down the path of being entrepreneurs. They are now recognized as job creators in the industry with more than 50start-ups established rather than job seekers while achieving the best of their endeavors.

The Alumni Association has a portal where alumni can get registered themselves at www.jualumni.in and get benefitted by having all the updated information, Job Opportunities, other guidance for their overall growth.



MAKERSPACE

MAKERSPACE is a trending concept in India which gives brilliant minds space and equipment to help them turn their groundbreaking ideas into reality. The very first makerspace in Rajasthan is now open in JECRC University and was inaugurated by Mr. Hasit Kaji, Vice President, TCS on 16th August 2018. JU MAKERSPACE is collaborative work areas packed with equipment and tools where students with a bend for invention and innovation can come together under one roof to build, design, create and engineer new things, products, ideas etc.. JU MAKER SPACE University has equipped with latest technology Big 3 D Printer at STI Hub JU and It can print objects of size 1 meter X 1 meter X 1 meter (1 meter cube) and all tools and equipment such as rare digital oscilloscope, common ICs and transistors are available.

In JU Makerspace students work on many different things like 3D modeling, 3D printing, aero modelling, Robotics, electronics, Wood working, Art, Prop Making, etc. The best part is that in JU Makerspace the only limitation to a student is his own imagination.

Achievements/ Events / Activities

JU Makerspace took various initiatives to organize a number of events like :

- "3D PRINTING WORKSHOP" for in-house Faculties & Staff.
- "MINI-MAKER CARNIVAL"
- JU Makerspace organized online workshop "**Summer with Makerspace**" during lockdown period in which JU Makerspace conducted a series of free online workshops on the technologies like Python, Arduino, Machine Learning, Web Development, 3-D Printing, Control Algorithms.
- **JU Makerspace and JU ECell**, conducted Ideathon 2021, which was held exclusively for First year students. The purpose of Ideathon was to keep innovation and entrepreneurship running in novice minds. In this event, 300+ JECRC freshmen participated to showcase and present their innovative ideas.

JU- Makerspace has tied up with 'Makers Lab', an initiative by Tech Mahindra. The tie up would strengthen JECRC students with latest and prevailing technological skills like Agritech, Defense, IOT, and AI/ML.

Amid pandemic 2020, JU Makerspace launched #Save_The_Saviours Initiative which was applauded by Hon'ble CM of Rajasthan, Sh. Ashok Gehlot on his social media handles. In the initiative JU Makerspace had committed itself towards manufacturing 5000+ face shields for hospitals of Delhi NCR to help our doctors, paramedics & sanitation workers so that they protect them from infection as they fight it out on the frontline.

During Covid-19 Pandemic in month of April 2021, JU Maker Space students have made two significant innovations to solve the problem of social distancing and wearing a mask namely Social Distance Badge Face Mask Detector. This work was much-admired and published in Rajasthan Patrika Newspaper and run in various National News Channel Like **ABP News, News Nation, News 18 and ETV India.**



Student Council: Voice of Students

"Service with Pride, Lead with Confidence and Inspire to Impact Lives" With this aim Student Council is leading the students since years, with the motive of effective and adaptive enhancement of students in the University Student Council being the "Voice of Students" work on the way of holistic growth of every student of the University. Student council works under the Student development office.

CLUB @ JU

| | | |
|--------------------------|-----------------------------|-------------------------------------|
| Catchy Cultural Club | Abhivyakti The Theatre Club | The Vogue: Fashion Club |
| Literature Club | Maker Space | Masterchef Club |
| Maverick Club Media Club | Terra Club | Quintessence Crew The Dancing Club |
| Swaraag The Music Club | Developer Student Club | Microsoft Learn Student Ambassadors |
| The Amazon League JU | Code Chef | Coding Ninjas |
| IEEE COSEC | Google Crowsource | JU- Makerspace |

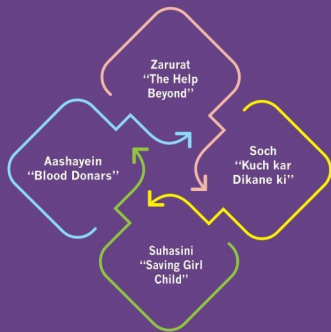
EVENTS & ACTIVITIES

| | | | |
|---|-----------------------------------|--|---|
| Student Leadership Development Initiative | ISRO Exhibition | Pratsahan "Techno Scholastic Festival" | RHYTHM "JU Techno Business Cultural Fest" |
| JU Verve- Inter Collegiate Sport Fest | Formation of Student Council 2021 | Manikarnika- Self defence workshop on women's day | Skillshala School Connect |
| RAAG-Let Your Heart Sing | Career Options After Class 12th | National Science Day | Online Yoga Sessions |
| Wonder of Words "WoW" Literary Extravaganza | Weekend Blast, D-vibe | Ju Eagles Intra University E-sports Championship For Cs-go | |

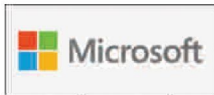
STUDENT EXPOSURE



ABHYUDAYA (SOCIAL INITIATIVES)



CORPORATE SPECIALISATION COURSES DETAILS



B.Tech./ BCA/ MCA (Cloud Computing)

Microsoft- JECRC University has entered into an Agreement with this world's leading IT Company, which enables us to offer joint degree programs in the technology of **Cloud Computing**. Hands-on experience and certification with Microsoft technology skills to land leading tech jobs for the students.



B.Tech. Computer Science & Business System (CSBS)

TATA Consultancy Services (TCS) -JECRC University is the only University in the state of Rajasthan to offer a 4 Year B.Tech Program in association with TCS. This curriculum designed by TCS aims to ensure that the students graduating from the program not only know the core topics of Computer Science but also developed an equal appreciation of humanities, management, sciences and human values.



B. Tech./ BCA/ MCA/ BBA/ MBA (AI&ML; IOT; Big Data; Cloud Computing; Business Intelligence; Data Security; IT Operations)

IBM - Through collaboration with IBM, which is the first of its kind in the country, our students have access to a wealth of resources on IBM's Learning Management System. Students will be able to get joint degree in the field of Artificial Intelligence & Machine Learning, Data Science, IOT and many more with certifications.



B.Tech./ BCA (Full Stack Web design; AI&ML; DevOps)

Xebia is a pioneering IT consultancy company, and delivers high-quality services to cover all aspects of digital transformation. Highly expertise trainers will train the students in the domain of AI & ML, DevOps and Full Stack Web Development.



B.Tech./ BCA/BBA/MCA/MBA (AI&ML; Data Science-Analytics-Visualization)

Samatrix Consulting is led by IIT Kharagpur, IIM Ahmedabad alumni with rich corporate experience of over 20 years with Intel and Tata Steel. The core team of Samatrix includes seasoned professionals with diverse educational background. It includes alumni from IITs, IITM and other technical and business streams. This is a full time specialization program in the domain of AI& ML and Data Science.



B.Tech./ BCA/ MCA (Cyber Security)

EC Council was founded in 2001 by Jay Bavisi in response to the September 11 attacks to certify professionals who could protect against attacks on electronic commerce. It launched the Certified Ethical Hacker (CEH) program for white hat hackers in 2003. It is a full time specialization program along with certifications in ethical hacking.

Faculty of Management - International Centre of Excellence (Courses Accredited by Professional Bodies)

JECRC University has partnered with ISDC – The International Skill Development Corporation to establish a distinguished International Centre of Excellence (ICoE) for offering Professional UG/PG Courses through the Faculty of Management. ISDC (International Skill Development Corporation) is a leading International Provider for British Education and Skills registered in United Kingdom (UK). ISDC has an access to 25 Professional Bodies in UK for their Market Expansion, Trans National Education and Growth. ISDC works with Universities and Higher Education Providers by Developing and Upgrading the Academic Degrees for Future to Seek External Accreditations / Memberships / Qualifications along with the University Degrees.

The International Centre of Excellence (ICoE) has been established to ensure that learners have a comprehensive understanding of the various global academic domains and certifications that are essential for them to stand out and meet the evolving industry standards. The Centre envisions to organize, converge and provide additional training to students to help them become self-reliant leaders with enhanced leadership characteristics. The Centre's numerous levels of Global Programmes are designed to assist students in gaining real world experience in various job roles to work in relevant industries. We offer the opportunity to participate in practical and integrated global programmes that are directly related to the industry. Our students earn highly relevant Global Qualifications that will aid them in their pursuit of further education or employment. Our programmes are designed to help our students to build Global Careers.

The International Centre for Excellence is an excellent choice for global education. Build on our unique teaching methods & out-of-class experiences, our students get a head start on their careers. Trained by industry experts who provide intensive, hands-on, and real-world knowledge each of our students is fine-tuned to be prepared for global career opportunities. ICoE facilitates various programmes at Undergraduate & Postgraduate Level most of which are externally accredited by relevant Global Professional Bodies which enable students to achieve additional Certifications, Qualifications and Memberships along with their Degrees.



| Course & Duration | Specialisations | External Professional Body Accreditation | Tuition Fee | Other Fee | Annual Fee | First Semester + Alumni & Admission Fee at the time of Admission |
|-------------------------------------|-------------------------------------|---|-------------|-----------|------------|--|
| B.Com (Hons) 3 Years | International Finance & Accounting | ACCA - Association of Chartered Certified Accountants | 65000 | 35000 | 100000 | 60000 |
| | Finance & Analytics | IoA- Institute of Analytics | | | | |
| | Management Accounting | CMA - Certified Management Accountants | | | | |
| | Financial Markets | IFM - Institute of Financial Markets | | | | |
| | Logistics & Supply Chain Management | — | | | | |
| BBA (Hons) 3 Years | Finance & Leadership | CIMA - Chartered Institute of Management Accountants | 84500 | 45500 | 130000 | 75000 |
| | Financial Markets | IFM - Institute of Financial Markets | | | | |
| | Digital Business | AI Society International | | | | |
| | Business Analytics | IoA- Institute of Analytics | | | | |
| | Digital Marketing | DMI - Digital Marketing Institute | | | | |
| Logistics & Supply Chain Management | — | | | | | |
| MBA 2 Years | International Finance | ACCA - Association of Chartered Certified Accountants | 140000 | 60000 | 200000 | 110000 |
| | Finance & Leadership | CIMA - Chartered Institute of Management Accountants | | | | |
| | Digital Business | AI Society International | | | | |
| | Business Analytics | IoA- Institute of Analytics | | | | |
| | Financial Markets | IFM - Institute of Financial Markets | | | | |
| | Digital & Strategic Marketing | DMI - Digital Marketing Institute | | | | |
| Logistics & Supply Chain Management | — | | | | | |
| M.Com 2 Years | International Finance & Accounting | ACCA - Association of Chartered Certified Accountants | 63000 | 27000 | 90000 | 55000 |
| | Management Accounting | CMA - Certified Management Accountants | | | | |

- ➔ One Time Alumni and Admission Fee: Rs. 10000/- (Non Refundable) at the time of Admission in all courses.
- ➔ Students have to pay the relevant Professional Body Fees over and above the JECRC Fees to achieve the Additional Certifications / Qualifications / Memberships.
- ➔ **Scholarship for UG Courses: B.Com (Hons.), BBA (Hons.)**
 - 20% Scholarship of Tuition Fee - aggregate percentage in 10+2 (80% to 89.99%).
 - 30% Scholarship of Tuition Fee - aggregate percentage in 10+2 (90% to 100%).



Academic Fees : Session 2021-22

JECRC University

| Courses | Tuition Fee | Other Fee | First Year Fee | Total Course Fee | Alumni Admission Fee One Time, Non Refundable | First Semester - Alumni & Admission Fee at the Time of Admission | Subsequent Semester | Duration of Course (Yr.) |
|--|-------------|-----------|----------------|------------------|---|--|---------------------|--------------------------|
| Faculty of Engineering | | | | | | | | |
| B.Tech : CSE, Civil, Electrical, Mechanical, Electronic | 1,15,500/- | 49,500/- | 1,65,000/- | 6,60,000/- | 10,000/- | 92,500/- | 82,500/- | 4 |
| B.Tech - CSE : with industry specialization | 1,29,500/- | 55,500/- | 1,85,000/- | 7,40,000/- | 10,000/- | 1,02,500/- | 92,500/- | 4 |
| M.Tech. | 49,000/- | 21,000/- | 70,000/- | 1,40,000/- | 10,000/- | 45,000/- | 35,000/- | 2 |
| Faculty of IT & Computer Application | | | | | | | | |
| BCA | 58,500/- | 31,500/- | 90,000/- | 2,70,000/- | 10,000/- | 55,000/- | 45,000/- | 3 |
| BCA : with industry specialization | 71,500/- | 38,500/- | 1,10,000/- | 3,30,000/- | 10,000/- | 65,000/- | 55,000/- | 3 |
| MCA | 70,000/- | 30,000/- | 1,00,000/- | 2,00,000/- | 10,000/- | 60,000/- | 50,000/- | 2 |
| MCA : with industry specialization | 84,000/- | 36,000/- | 1,20,000/- | 2,40,000/- | 10,000/- | 70,000/- | 60,000/- | 2 |
| Faculty of Management | | | | | | | | |
| BBA | 65,000/- | 35,000/- | 1,00,000/- | 3,00,000/- | 10,000/- | 60,000/- | 50,000/- | 3 |
| BBA : with industry specialization | 78,000/- | 42,000/- | 1,20,000/- | 3,60,000/- | 10,000/- | 70,000/- | 60,000/- | 3 |
| BBA-Tourism and Hospitality Management | 71,500/- | 38,500/- | 1,10,000/- | 3,30,000/- | 10,000/- | 65,000/- | 55,000/- | 3 |
| BBA-Banking Financial Service and Insurance | 71,500/- | 38,500/- | 1,10,000/- | 3,30,000/- | 10,000/- | 65,000/- | 55,000/- | 3 |
| B.Com | 48,750/- | 26,250/- | 75,000/- | 2,25,000/- | 10,000/- | 47,500/- | 37,500/- | 3 |
| MBA | 87,500/- | 37,500/- | 1,25,000/- | 2,50,000/- | 10,000/- | 72,500/- | 62,500/- | 2 |
| MBA : with industry specialization | 1,01,500/- | 43,500/- | 1,45,000/- | 2,90,000/- | 10,000/- | 82,500/- | 72,500/- | 2 |
| MSW-Human Resource Management & Industrial Relations | 56,000/- | 24,000/- | 80,000/- | 1,60,000/- | 10,000/- | 50,000/- | 40,000/- | 2 |
| Faculty of Hotel Management | | | | | | | | |
| B.Sc. Hospitality & Hotel Management | 48,750/- | 31,250/- | 80,000/- | 2,40,000/- | 10,000/- | 50,000/- | 40,000/- | 3 |
| Bachelor of Hotel Management & Catering Technology | 66,500/- | 33,500/- | 1,00,000/- | 4,00,000/- | 10,000/- | 60,000/- | 50,000/- | 4 |
| Faculty of Journalism & Mass Communication | | | | | | | | |
| BA in Journalism & Mass Communication | 58,500/- | 36,500/- | 95,000/- | 2,85,000/- | 10,000/- | 57,500/- | 47,500/- | 3 |
| MA in Journalism & Mass Communication | 42,000/- | 23,000/- | 65,000/- | 1,30,000/- | 10,000/- | 42,500/- | 32,500/- | 2 |
| Faculty of Science | | | | | | | | |
| B.Sc. (Hons.) | 48,750/- | 26,250/- | 75,000/- | 2,25,000/- | 10,000/- | 47,500/- | 37,500/- | 3 |
| B.Sc. (Hons.) Data Science | 45,500/- | 24,500/- | 70,000/- | 2,10,000/- | 10,000/- | 45,000/- | 35,000/- | 3 |
| B.Sc. Pass Course | 39,000/- | 21,000/- | 60,000/- | 1,80,000/- | 10,000/- | 40,000/- | 30,000/- | 3 |
| M.Sc. - Biotech / Microbiology | 56,000/- | 24,000/- | 80,000/- | 1,60,000/- | 10,000/- | 50,000/- | 40,000/- | 2 |
| M.Sc. - Physics / Chemistry / Mathematics / Statics / Botany / Zoology | 45,500/- | 19,500/- | 65,000/- | 1,30,000/- | 10,000/- | 42,500/- | 32,500/- | 2 |
| Faculty of Allied Health Sciences | | | | | | | | |
| BPT | 42,250/- | 22,750/- | 65,000/- | 2,60,000/- | 10,000/- | 42,500/- | 32,500/- | 4 |
| BRIT, BOTT, BMLT | 42,250/- | 22,750/- | 65,000/- | 1,95,000/- | 10,000/- | 42,500/- | 32,500/- | 3 |
| Faculty of Law | | | | | | | | |
| Integrated Law | 70,000/- | 35,000/- | 1,05,000/- | 5,25,000/- | 10,000/- | 62,500/- | 52,500/- | 5 |
| LL.M. | 49,000/- | 26,000/- | 75,000/- | 1,50,000/- | 10,000/- | 47,500/- | 37,500/- | 2 |
| Faculty of Design | | | | | | | | |
| B.Des.-Interior Design, / Jewellery Designing & Manufacturing | 77,000/- | 38,000/- | 1,15,000/- | 4,80,000/- | 10,000/- | 67,500/- | 57,500/- | 4 |
| Bachelor of Visual Art (BVA) Painting / Graphic Design | 56,000/- | 29,000/- | 85,000/- | 3,40,000/- | 10,000/- | 52,500/- | 42,500/- | 4 |
| B.Des. - Fashion Design | 1,05,000/- | 50,000/- | 1,55,000/- | 6,20,000/- | 10,000/- | 87,500/- | 77,500/- | 4 |
| Faculty of Humanities | | | | | | | | |
| BA (Hons.) English, Economics, Psychology, Political Science | 39,000/- | 26,000/- | 65,000/- | 1,95,000/- | 10,000/- | 42,500/- | 32,500/- | 3 |
| MA English, Economics, Psychology | 45,500/- | 24,500/- | 70,000/- | 1,40,000/- | 10,000/- | 45,000/- | 35,000/- | 2 |

Doctoral Program

| Program | Duration | Branches/Specialisations | Fee Structure | Eligibility |
|---------|---|--|--|--|
| Ph.D. | Minimum Duration for Ph.D. 3 Years (As per UGC Norms) which is extendable for another 3 Years on Year to Year basis subject to satisfactory progress by the Research Scholar. | Engg. & Technology, Management, Commerce, Hotel Management, Journalism & Mass Communication, Physical & Life Sciences, Law, English, Economics and Psychology. More Disciplines may be added subject to availability of resources. | Admission & Registration Fee Rs. 25000/- Tuition Fee per year Rs. 50000/- Thesis Evaluation Fee Rs. 40000/- | Master's Degree (Related Discipline) with minimum 55% marks from a recognized University |

Category Relaxation

5% relaxation in eligibility shall be permissible in all UG/PG Programs (Except Doctoral Programs) to the candidates belonging to SC/ST/Rajasthan State OBC-Non Creamy Layer and Women category.

Financial Support @ No Cost EMI

ZERO COST FEE LOANS BY MS FINCAP

ZERO COST FINANCE / EASY REPAYMENT



MS Fincap Private Limited is a Non-Banking Finance Company registered with Reserve Bank of India incorporated under the provisions of Companies Act, 2013. In collaboration with the JECRC University, MSFC is offering Fee Loan at No Cost EMI.

Features

- Zero interest rate loan.
- Collateral free loan.
- Transparent and hassle free application & approval process.
- Quick approval & disbursement – within 3 to 5 days*
- Loan upto 100% of academic fees.
- Tailor made repayment options- up to 10 No Cost EMIs.

Eligibility Criteria

- Student should be a permanent resident in the state of Rajasthan.
- Age of student's co-applicant should be minimum 21 years. Minor student can avail the fee loan facility through his/her guardian.
- Applicant/Co-Applicant should have a good credit score.
- Applicant/Co-Applicant's financials should support the proposed EMIs.



Contact us

At JECRC University- through our personnel present on the campus to assist you in the process.

www.edcred.in | info.edcred@msfincap.com | Mob. : 9166845335, 9700014666

Hostel Fees

| Room Category | Per Annum Fee | One time non refundable utility fee (with first installment) | First installment at the time of admission (with one time Non-Refundable utility fee) | Second Installment * |
|----------------------------|---------------|--|---|----------------------|
| AC Room | 140000 | 5000 | 89000 | 56000 |
| Non AC Room (Three Seated) | 110000 | 5000 | 71000 | 44000 |
| Non AC Room (Four Seated) | 100000 | 5000 | 65000 | 40000 |

*Payable in October / November as per notification of University.

Note:

- One Time Security Rs. 5000/- with first instalment, Non-Refundable.
- One Time TV Charges Fee Rs. 5000/- (Optional in AC Rooms only: Non Refundable)
- Fee is being charged for 10 months only.
- Gymnasium fee: Rs. 1000/- Per Semester (Optional, Only for Hostellers)
- GST as applicable.
- If the hostel operations are suspended temporarily due to any reason beyond the control of the University authorities, the hostel fee will not be refunded. Example : Covid-19, any pandemic, curfew, etc., etc.

Transportation Fees

| Transportation Fee | Per Annum Fee | First Installment at the time of admission | Second Installment* |
|--------------------|---------------|--|---------------------|
| Bus Fee | 30000 | 18000 | 12000 |

*Payable in October / November as per notification of University.

Note:

- Fee shall be suitably revised in subsequent years based upon actual costs but not more than 10% per annum.
- Fee is being charged for 10 months only, i.e. two semesters.
- Bus facility is provided for two continuous semester. Hence, midyear withdrawal from bus facility is not permitted and no refund will be made against such withdrawal.

How to Apply

| Application Form | Cost of Application form | Remarks |
|---|--|--|
| Forms can be filled online visit www.jecrcuniversity.edu.in Offline Forms also available at JECRC University Campus. | UG & PG Courses: Rs. 500/- Ph.D. Program Rs. 1500/- | Application form Fee not Refundable in any case. |

For Important Dates Refer to JU Webstie: www.jecrcuniversity.edu.in



Online Application 2021



Online Admission 2021



#beaJECRCian



Plot No. IS-2036 to 2039, Ramchandrapura Industrial
Area, Vidhani, Jaipur, Rajasthan-303905

✉ admission@jecrcu.edu.in 🌐 jecrcuniversity.edu.in

Toll Free No. 1800 120 5616 | follow us on 